

Bethel Village

\$ 265,000



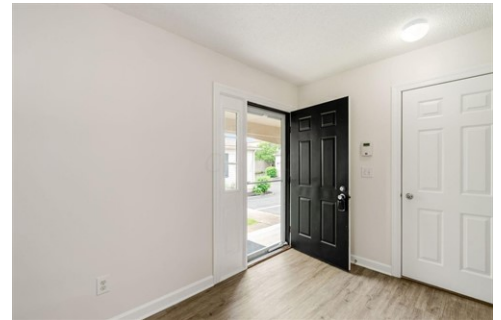
2517 Dahlia Way Unit 64D, Columbus, OH 43235

- » Beds: 2 | Baths: 2 Full, 1 Half
- » MLS #: 224014106
- » Condominium | 1,152 ft² | Lot: 436 ft²
- » End Condominium Home with Updates Throughout
- » 2 Bedrooms, 2 1/2 Baths, 1 Car Attached Garage
- » More Info: 2517DahliaWay.com



Mike Whiteman
Andy Whiteman
(614) 406-5600 (Mike / Text or Call)
(614) 425-4500 (Andy / Text or Call)
mike@whitemangroup.com
<http://www.whitemangroup.com>

RE/MAX



Welcome to this beautiful end unit condo in Bethel Village with outstanding updates & meticulous care! Entering from the covered front porch, you will be greeted by the spacious floorplan with plenty of living space. The first-floor features updated kitchen w/quartz countertops, newer cabinets, SS appliances, generous sized great room, half bath, garage w/storage niche. Upstairs offers 2 bedrooms & 2 full baths. Abundance of natural light throughout. The full basement is ready to finish with rough-in for bath, much storage space & laundry. No direct rear neighbors, lots of back & side yard green space. HOA fee includes water, sewer, pool, clubhouse & fitness gym. Dublin Schools/Columbus Taxes. Convenient location, walk to shopping & restaurants. Your next home is here on Dahlia Way!

